

# Childbirth / Labor



## History

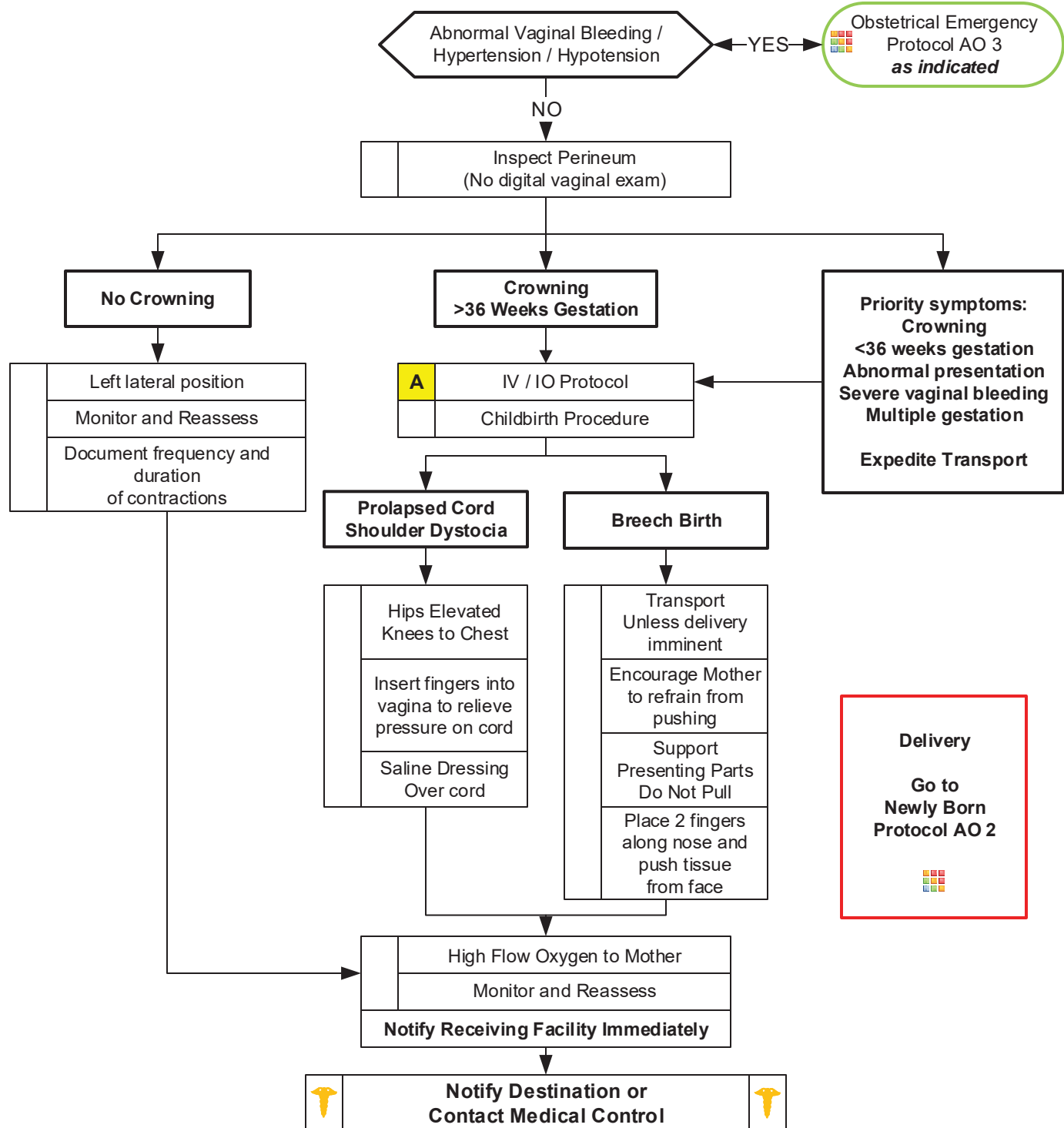
- Due date
- Time contractions started / how often
- Rupture of membranes
- Time / amount of any vaginal bleeding
- Sensation of fetal activity
- Past medical and delivery history
- Medications
- Gravida / Para Status
- High Risk pregnancy

## Signs and Symptoms

- Spasmodic pain
- Vaginal discharge or bleeding
- Crowning or urge to push
- Meconium

## Differential

- Abnormal presentation
  - Buttock
  - Foot
  - Hand
- Prolapsed cord
- Placenta previa
- Abruptio placenta



Adult Obstetrical Protocol Section

**Delivery**  
 Go to  
**Newly Born Protocol AO 2**

# Childbirth / Labor



Consider the possibility of multiple births.

Remember you are dealing with 2 patients.

If delivery occurs, consider the safety of the infant and mother when making transport decisions.

## Pearls

- **Recommended Exam (of Mother): Mental Status, Heart, Lungs, Abdomen, Neuro**
- **Record APGAR at 1 minute and 5 minutes after birth.**
- **After delivery, massaging the uterus (lower abdomen) will promote uterine contraction and help to control post-partum bleeding.**
- Document all times (delivery, contraction frequency, and length).
- **Transport or Delivery?**  
Decision to transport versus remain and deliver is multifactorial and difficult. Generally it is preferable to transport. Factors that will impact decision include: number of previous deliveries; length of previous labors; frequency of contractions; urge to push; and presence of crowning.
- **Maternal positioning for labor:**  
Supine with head flat or elevated per mother's choice. Maintain flexion of both knees and hips. Elevated buttocks slightly with towel. If delivery not imminent, place mother in the left, lateral recumbent position with right side up about 10 – 20°.
- **Umbilical cord clamping and cutting:**  
Place first clamp about 10 cm from infant's abdomen and second clamp about 5 cm away from first clamp.
- **Multiple Births:**  
Twins occur about 1/90 births. Typically manage the same as single gestation. If imminent delivery call for additional resources, if needed. Most twins deliver at about 34 weeks so lower birth weight and hypothermia are common. Twins may share a placenta so clamp and cut umbilical cord after first delivery. Notify receiving facility immediately.
- If maternal seizures occur, refer to the Obstetrical Emergencies Protocol.
- Some perineal bleeding is normal with any childbirth. Large quantities of blood or free bleeding are abnormal.