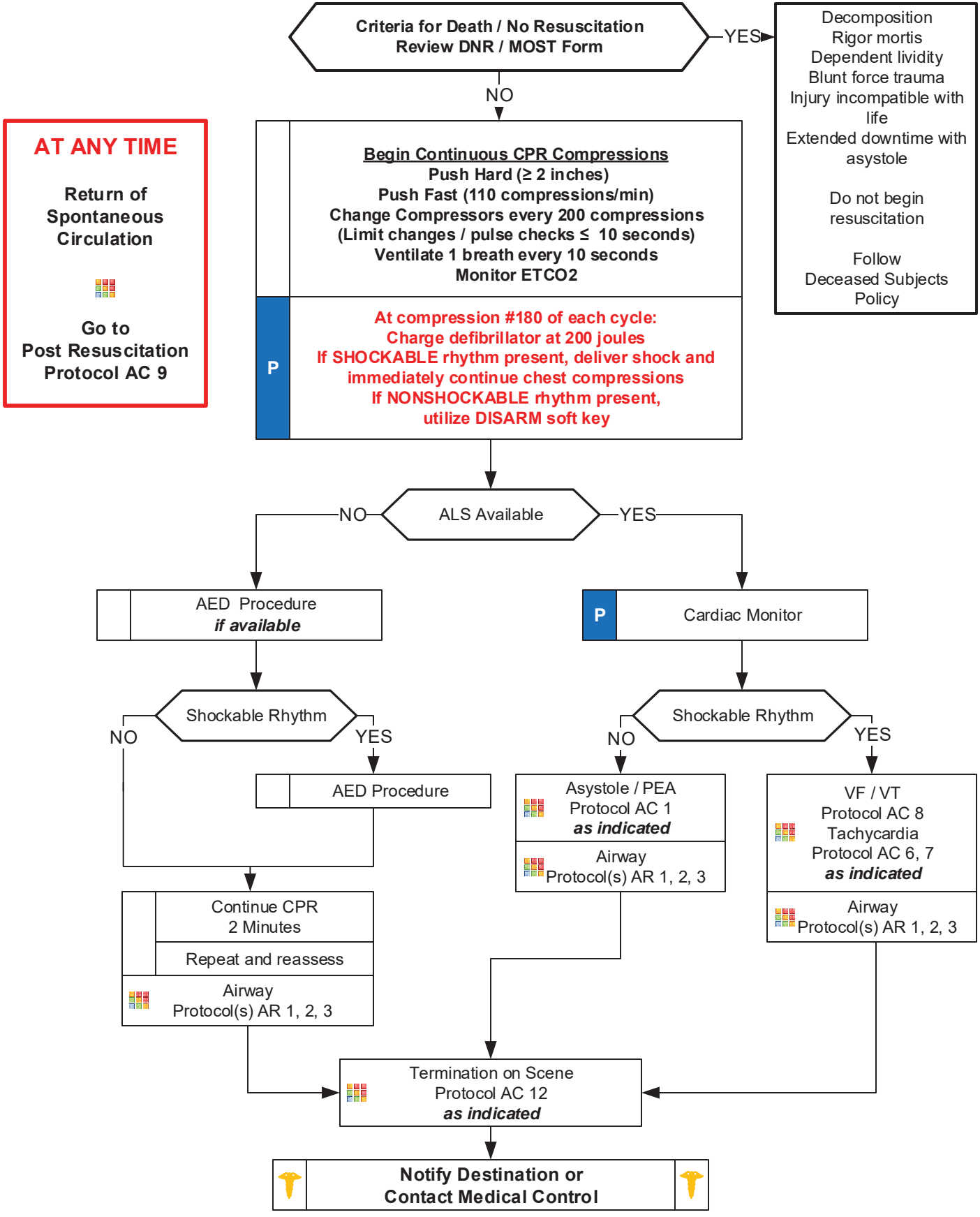


Cardiac Arrest; Adult



Cardiac Arrest; Adult



If arrest is witnessed by healthcare provider and defibrillator is available, then immediate defibrillation is indicated.
If arrest is not witnessed by healthcare provider then perform two (2) minutes of CPR prior to defibrillation.
Resuscitation attempts in Adult Cardiac Arrest should continue for 30 minutes on scene or until ROSC is achieved.

Pearls

- **Team Focused Approach is recommended; assign responders to predetermined tasks. Refer to optional protocol or development of local agency protocol.**
- **Efforts should be directed at high quality and continuous compressions with limited interruptions and early defibrillation when indicated.**
- **DO NOT HYPERVENTILATE: Ventilate 1 breath every 10 seconds with continuous, uninterrupted compressions.**
- **Do not interrupt compressions to place endotracheal tube. Consider BIAD first to limit interruptions.**
- **Passive oxygenation optional in agencies practicing Team Focused Approach.**
- Reassess and document BIAD and / or endotracheal tube placement and EtCO₂ frequently, after every move, and at transfer of care.
- **IV / IO access and drug delivery is secondary to high-quality chest compressions and early defibrillation.**
- **Defibrillation:** Follow manufacturer's recommendations concerning defibrillation / cardioversion energy when specified.
- **End Tidal CO₂ (EtCO₂)**
 - If EtCO₂ is < 10 mmHg, improve chest compressions.
 - If EtCO₂ spikes, typically > 40 mmHg, consider Return of Spontaneous Circulation (ROSC)
- **Special Considerations**
 - **Maternal Arrest** - Treat mother per appropriate protocol with immediate notification to Medical Control and rapid transport preferably to obstetrical center if available and proximate. Place mother supine and perform Manual Left Uterine Displacement moving uterus to the patient's left side. IV/IO access preferably above diaphragm. Defibrillation is safe at all energy levels.
 - **Renal Dialysis / Renal Failure** - Refer to Dialysis / Renal Failure protocol caveats when faced with dialysis / renal failure patient experiencing cardiac arrest.
 - **Opioid Overdose** - Naloxone cannot be recommended in opioid-associated cardiac arrest. If suspected, attention to airway, oxygenation, and ventilation increase in importance. Naloxone is not associated with improved outcomes in cardiac arrest.
 - **Drowning / Suffocation / Asphyxiation / Hanging / Lightning Strike** – Hypoxic associated cardiac arrest and prompt attention to airway and ventilation is priority followed by high-quality and continuous chest compressions and early defibrillation.
- **Transcutaneous Pacing:**
 - Pacing is NOT effective in cardiac arrest and pacing in cardiac arrest does NOT increase chance of survival
 - Success is based on proper planning and execution. Procedures require space and patient access. Make room to work.
 - Discussion with Medical Control can be a valuable tool in developing a differential diagnosis and identifying possible treatment options.