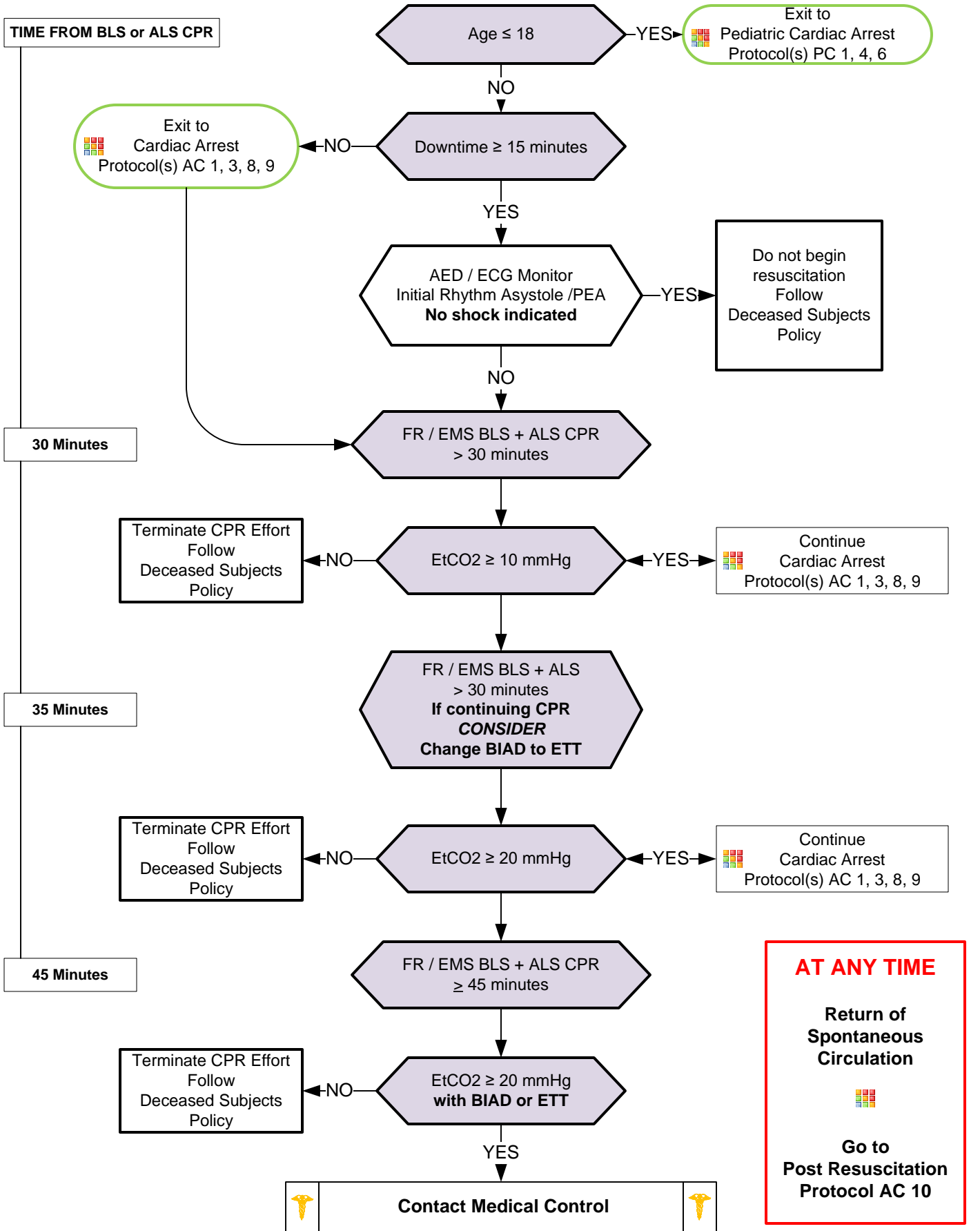




# ON SCENE RESUSCITATION / TERMINATION OF CPR



Adult Cardiac Protocol Section



# ON SCENE RESUSCITATION / TERMINATION OF CPR

## Pearls

- **General approach:**
  1. Determine if a terminal disease is involved?
  2. Is there an advanced directive such as a DNR / MOST form?
  3. Did the patient express to your historian any desires regarding resuscitation and if so what measures?
  4. Remember a living will is not a DNR.
- Obtain a history while resuscitation efforts are ongoing. Determine the most legitimate person on scene as your information source such as a spouse, child, or sibling or Durable Health Care Power of Attorney.
- Basic and Advanced Life Support may use for treatment decisions.