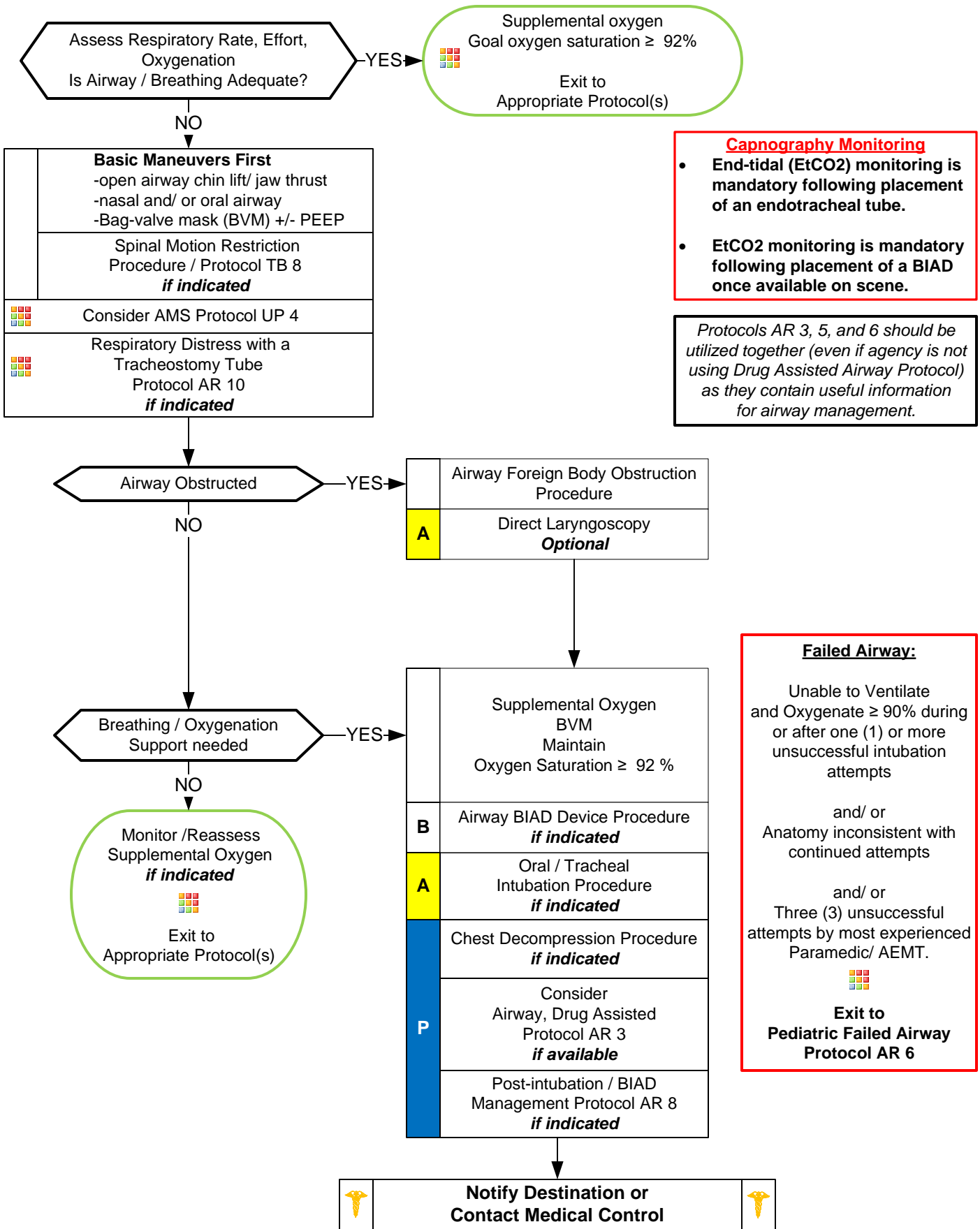




PEDIATRIC AIRWAY





PEDIATRIC AIRWAY

Pediatric Patient General Considerations:

A pediatric patient is defined by fitting a Length-based Resuscitation Tape, Age \leq 15, weight \leq 49 kg.

Patients off the Length-based resuscitation tape should have weight based medications until age \geq 16 or weight \geq 50 kg. Special needs children may require continued use of Pediatric based protocols regardless of age and weight. Initial assessment should utilize the Pediatric Assessment Triangle which encompasses Appearance, Work of Breathing and Circulation to skin.

The order of assessment may require alteration dependent on the developmental state of the pediatric patient. Generally the child or infant should not be separated from the caregiver unless absolutely necessary during assessment and treatment.

Pearls

This protocol is for use in patients who FIT within a Pediatric Medication/ Skill Resuscitation System Product.

- **For the purposes of this protocol, a secure airway is when the patient is receiving appropriate oxygenation and ventilation.**
- **If an effective airway is being maintained by BVM with continuous pulse oximetry values of \geq 90%, it is acceptable to continue with basic airway measures.**
- **Ventilation rate:**
30 for Neonates, 25 for Toddlers, 20 for School Age, and for Adolescents the normal Adult rate of 10 - 12 per minute. Maintain EtCO₂ between 35 - 45 and avoid hyperventilation.
- **Ketamine for airway intervention and/ or sedation purposes:**
Ketamine may be used in pediatric patients (fit within a Pediatric Medication/Skill Resuscitation System product, \leq 15 years of age, or \leq 49 kg) with DIRECT ONLINE MEDICAL ORDER by the system MEDICAL DIRECTOR or ASSISTANT MEDICAL DIRECTOR only.
Agencies using Ketamine in the pediatric population must also be using in their adult population.
- **KETAMINE:**
Ketamine may be used with or without a paralytic agent in conjunction with either an OPA, NPA, BIAD or endotracheal tube. BIAD is preferred over endotracheal tube until hypoxia and/ or hypotension are corrected.
Ketamine may be used during the resuscitation of hypoxia or hypotension in conjunction with airway management. Once hypoxia and hypotension are corrected, use of a sedative and paralytic can proceed if indicated.
Ketamine may be used in the dangerously combative patient requiring airway management IM. IV/ IO should be established as soon as possible.
Ketamine may be used for sedation once a BIAD or endotracheal tube are established and confirmed.
Agencies using Ketamine must follow Standards Policy: Medial Policy Section Ketamine Program Requirements. Medical Policy 2.
- **Intubation:**
Attempt defined as laryngoscope blade passing the teeth or endotracheal tube passed into the nostril.
Use of a stylet is recommended in all pediatric intubations.
Endotracheal tube: Depth = 3 x the diameter of the ETT. Estimated Size = 16 + age (years) / 4. Term newborn = 3.5 mm.
If First intubation attempt fails, make an adjustment and try again: (Consider change of provider in addition to equipment)
- **NC EMS Airway Evaluation Form:**
Fully complete and have receiving healthcare provider sign confirming BIAD or endotracheal tube placement.
Complete online in region specific *ReadyOp* and upload completed form.
Complete when Ketamine, Etomidate, Succinylcholine and/ or Rocuronium or used to facilitate use of a BIAD and/ or endotracheal intubation. Paramedics/ AEMT should consider using a BIAD if endotracheal intubation is unsuccessful.
- Secure the endotracheal tube well and consider c-collar in pediatric patients (even in absence of trauma) to better maintain ETT placement.
Manual stabilization of endotracheal tube should be used during all patient moves / transfers.
- **Airway Cricothyrotomy Percutaneous Needle Procedure:**
Indicated as a lifesaving / last resort procedure in pediatric patients < 10 years of age.
Very little evidence to support it's use and safety.
A variety of alternative pediatric airway devices now available make the use of this procedure rare.
Agencies who utilize this procedure must develop a written procedure, establish a training program, maintain equipment and submit procedure and training plan to the State Medical Director/ Regional EMS Office.
 \geq 12 years: Surgical cricothyrotomy or commercial kits based on agency preference recommended.
- **DOPE:** Displaced tracheostomy tube/ ETT, Obstructed tracheostomy tube/ ETT, Pneumothorax and Equipment failure.